

MAINTENANCE BOOK FOR ESCAPE DOORS

INITIAL OPERATION

Date	
Installer	
Customer	

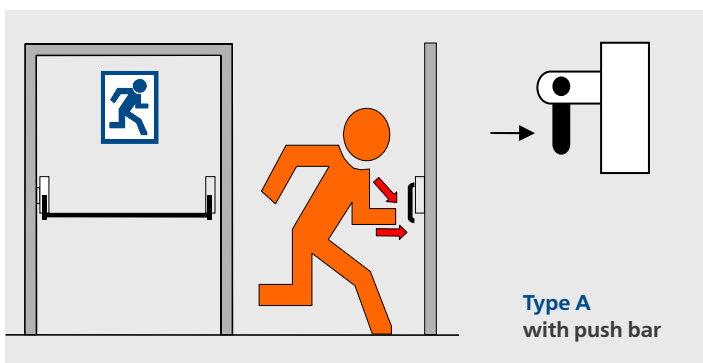
Door location	
Product	<input type="checkbox"/> Panic exit hardware according to EN 1125
	<input type="checkbox"/> Emergency exit hardware according to EN 179

MEASUREMENT OF RELEASE FORCES

	Result 1	Result 2	Result 3
Active leaf			
Passive leaf			

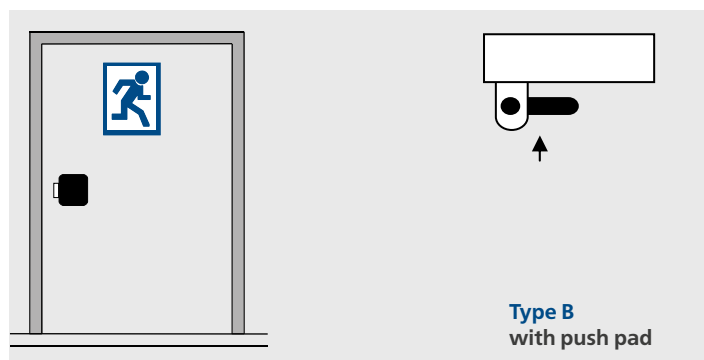
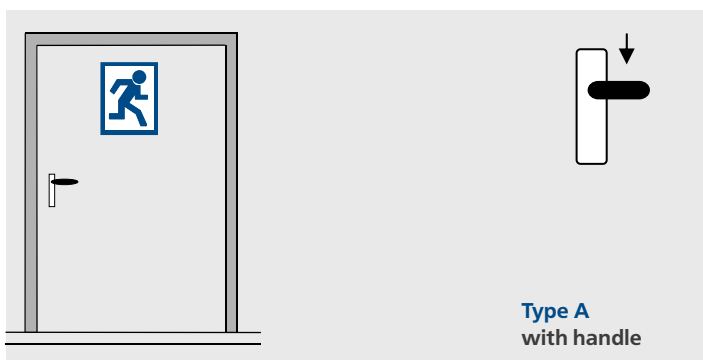
PANIC EXIT HARDWARE ACCORDING TO EN 1125

Determination of the release forces in N using a force gauge in the direction of the arrow



EMERGENCY EXIT HARDWARE ACCORDING TO EN 179

Determination of the release forces in N using a force gauge in the direction of the arrow



CHECK LIST

Check of the panic or emergency opening function.	<input type="checkbox"/>
Check counterparts such as floor recesses for dirt and clean if necessary.	<input type="checkbox"/>
Installation has been carried out in accordance with the manufacturer's installation instructions.	<input type="checkbox"/>
The lock is lubricated according to the manufacturer's instructions.	<input type="checkbox"/>
No subsequent changes such as the subsequent installation of additional locking devices.	<input type="checkbox"/>
All components of the system also comply with the list of approved components originally supplied with the system.	<input type="checkbox"/>
No loosening of fixing screws of the fittings.	<input type="checkbox"/>

PERIODIC MAINTENANCES

MAINTENANCES

Customer		Product	<input type="checkbox"/>	Panic exit hardware according to EN 1125
			<input type="checkbox"/>	Emergency exit hardware according to EN 179

RECOMMENDED MAINTENANCE INTERVALS

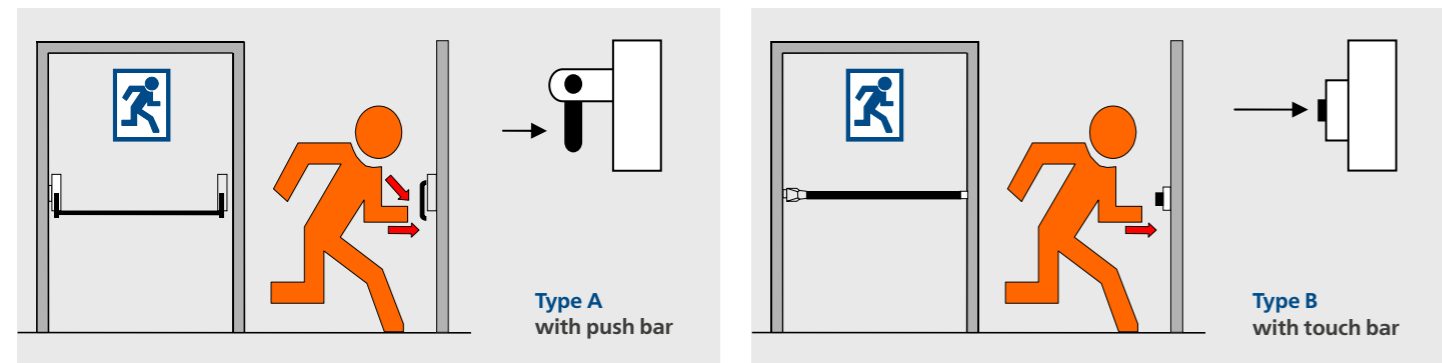
Depending on the frequency of use, maintenance must be carried out at least monthly, but at the latest after approx. 20,000 actuation cycles.

MEASUREMENT OF RELEASE FORCES

Please enter the determined values in the list on the following pages.

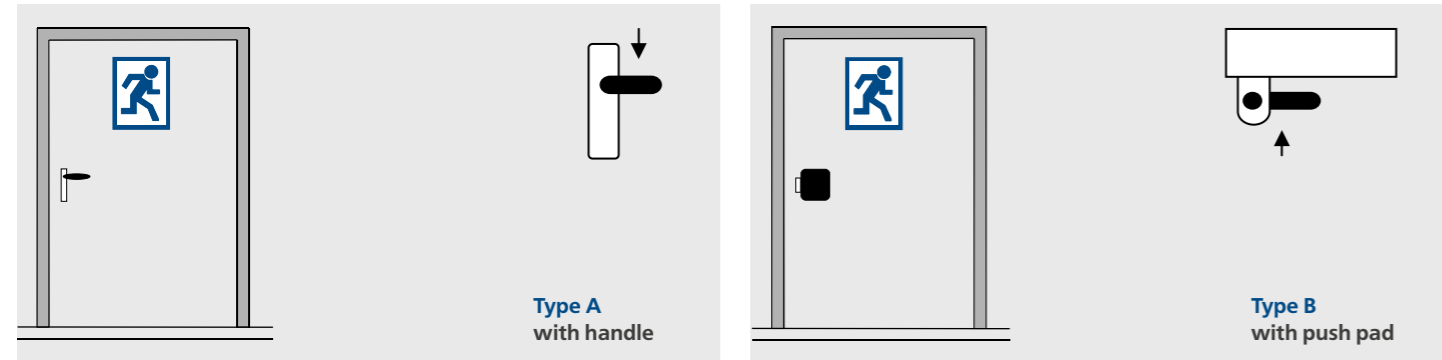
PANIC EXIT HARDWARE ACCORDING TO EN 1125

Determination of the release forces in N using a force gauge in the direction of the arrow



EMERGENCY EXIT HARDWARE ACCORDING TO EN 179

Determination of the release forces in N using a force gauge in the direction of the arrow



CHECK LIST

Check of the panic or emergency opening function.	<input type="checkbox"/>
Check counterparts such as floor recesses for dirt and clean if necessary.	<input type="checkbox"/>
Installation has been carried out in accordance with the manufacturer's installation instructions.	<input type="checkbox"/>
The lock is lubricated according to the manufacturer's instructions.	<input type="checkbox"/>
No subsequent changes such as the subsequent installation of additional locking devices.	<input type="checkbox"/>
All components of the system also comply with the list of approved components originally supplied with the system.	<input type="checkbox"/>
No loosening of fixing screws of the fittings.	<input type="checkbox"/>

MAINTENANCE LIST

Date	Maintenance person	Determination of the release forces in Newton (N)						Check list processed		
		Result 1		Result 2		Result 3		yes	no	Rework necessary
		Active leaf	Passive leaf	Active leaf	Passive leaf	Active leaf	Passive leaf			



MAINTENANCE LIST

Date	Maintenance person	Determination of the release forces in Newton (N)						Check list processed		
		Result 1		Result 2		Result 3		yes	no	Rework necessary
		Active leaf	Passive leaf	Active leaf	Passive leaf	Active leaf	Passive leaf			